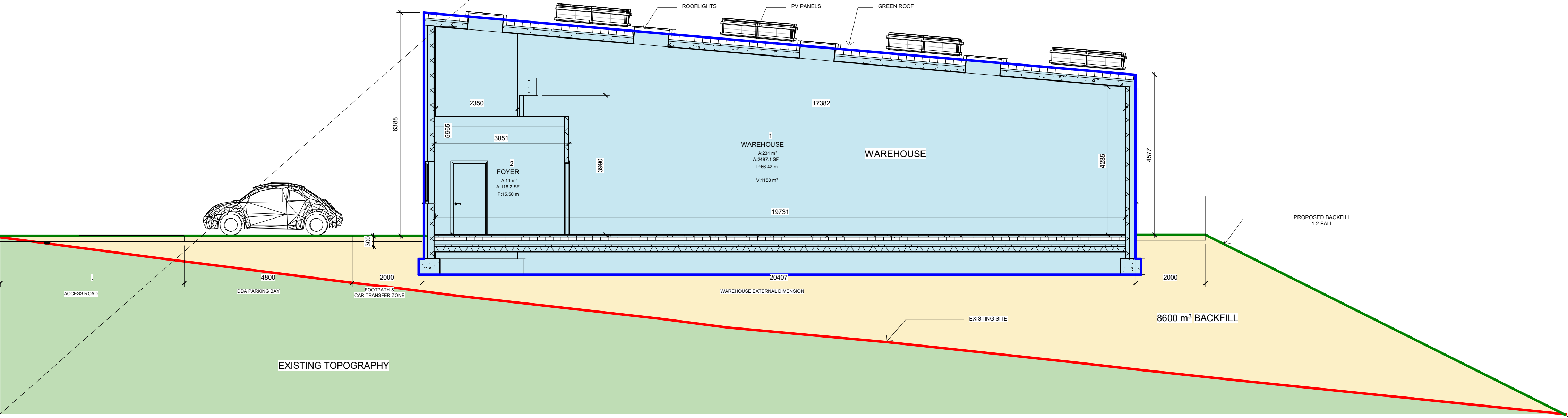
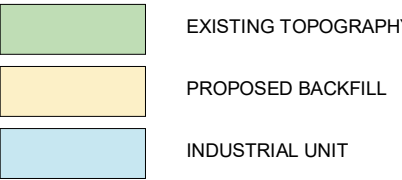


01 Section Through Plot Nx
1:100



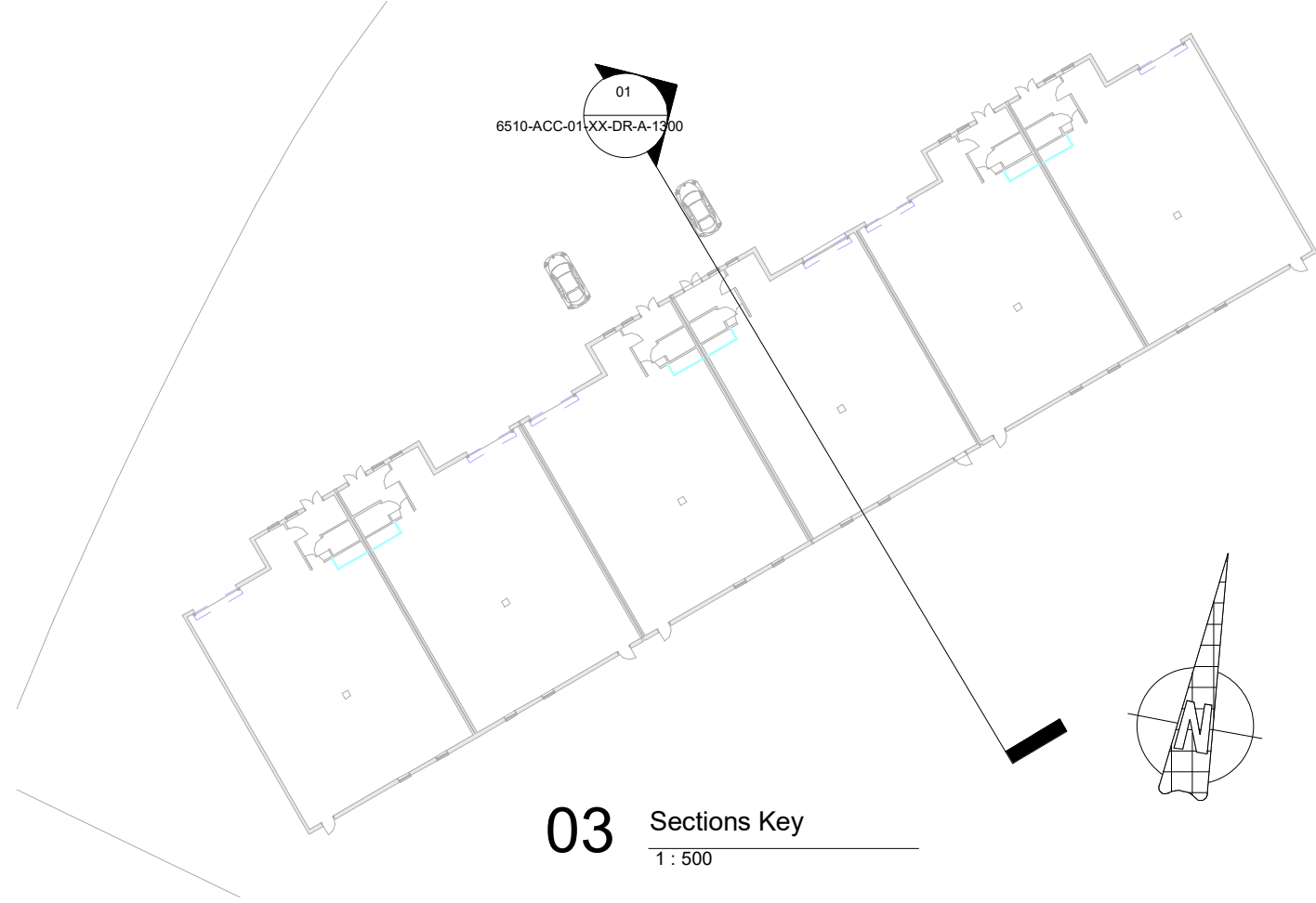
02 Section Through Industrial Unit
1:75

KEY / LEGEND



BRIEF OF SPECIFICATIONS

- Three phase power
- Power-Floated concrete floor
- Insulated Roller Shutter door, doors and windows
- DDA WC
- Tea Point
- Reception/office
- Mezzanine potential
- Plant zone to rear
- Green roof
- Roof windows
- Solar panels
- B1 - B8 use



03 Sections Key
1:500

PQ	First Issue	As Sheet	LN
Rev	Description	Date	Issued by

allen construction consultancy ltd

Highlands House, Highlands Road,
Shirley, Solihull, B99 4ND
Tel: +44 (0)121 766 2900
Email: info@allen-uk.com

Client

Hastings
Borough Council

Project
Hastings - Churchfields Business Centre
- Gno Industrial Units on Plot PX -
Sidney Little Road, Hastings, TN38 9PU

Sheet
Sections

Project No.	6510
Date	07/09/2020
Drawn by	LN
Checked by	PQ,PP
Dwg	6510-ACC-01-XX-DR-A-1300
Scale	As indicated
Rev	P0